



Republic Services Recycling Program



Sustainability in Action

What CAN you recycle?



- Paper: office and printer (white and colored), envelopes, junk mail, magazines, newspaper, Post-it notes
- Aluminum, bi-metal and steel cans
- Rigid plastics: bottles and jugs (i.e., water, soda, juice, detergent and milk bottles)
- Flattened, empty cardboard boxes
- Empty, clean and dry fiber cartons
- Clean glass bottles and jars

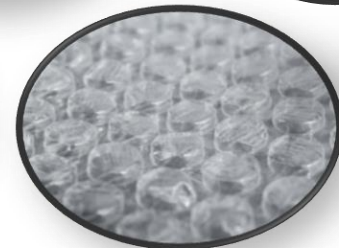


Recycling must be CLEAN, DRY and EMPTY

What CAN'T you recycle?



- Food or beverage waste
- Soft plastic packaging & bubble wrap
- Styrofoam
- Padded & Tyvek style envelopes
- Styrofoam coffee cups & K cups
- Tissues & paper towels
- Straws and plastic cutlery
- Candy & chip wrappers
- Pizza boxes
- Shredded paper
- Paper plates
- Plastic bags
- Pouches



Is your waste in the right place?

What about the chasing arrows?

- The number on the item identifies the plastic resin code of what it is made from, not necessarily its recyclability.



This says to drop off at the store

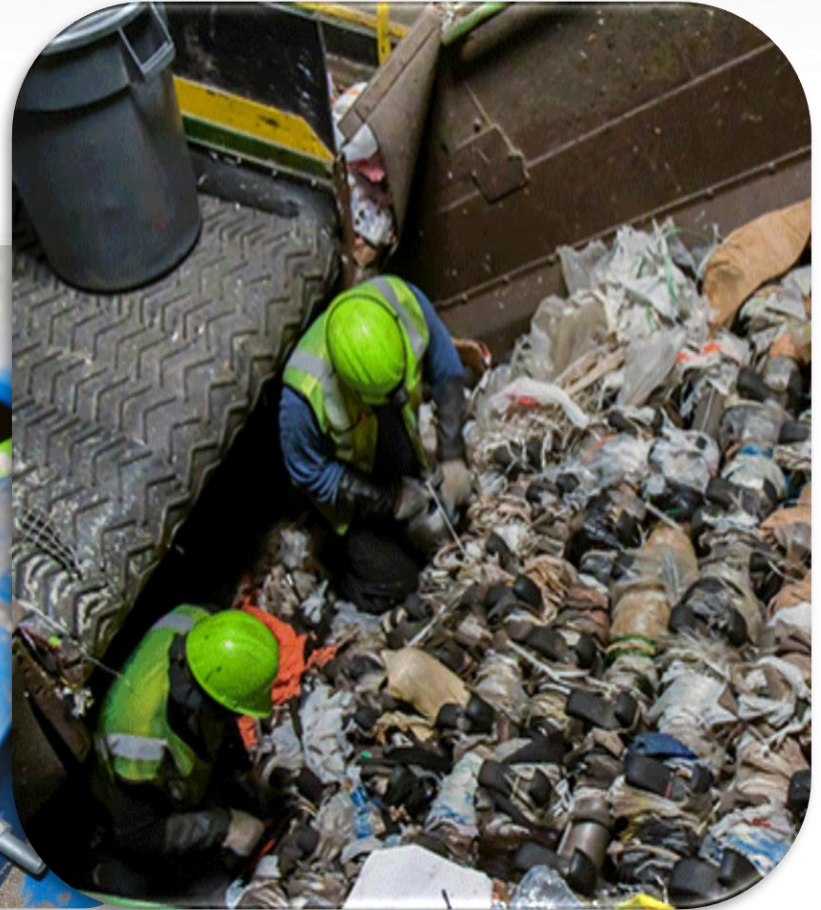


This is a #4 but it is a soft plastic and must go in the trash

Consider starting a soft plastics recycling area at home and drop off at the grocery store

Plastic bags and flexible packaging should not go in the recycling!

- Plastic bags/packaging can get caught in the machinery and have to be cut out **by hand**.



Why we shouldn't put electronics in the trash.



- Since 2012 electronics have been banned from Illinois landfill because they contain hazardous waste such as lead and mercury.
- Last year, there were 343 reported fires at U.S. and Canadian waste and recycling facilities due to battery-powered electronics, many of which could have been prevented had consumers recycled their old cell phones, laptops and other lithium battery-powered electronic devices.

Recycling procedure 101

- Remove packaging and flatten boxes.
- Rinse any items with food residue.
- Nothing smaller than a credit card in the recycling.
- Place all recycling **loose** inside the appropriate container.
- **Do not use bags!** Clear bags are used **only** to prevent leakage in bottle and can containers at businesses which should be then emptied loosely into outside containers.



Please see more information and watch more videos, please check out our website at:

<https://recyclingsimplified.com/>

Or the Chicago recycling website at:

<https://www.recyclebycity.com/chicago>

To check out the Chicago Action Plan (CAP)

<https://www.chicago.gov/content/dam/city/sites/climate-action-plan/documents/Chicago-CAP-071822.pdf>

Thank You!