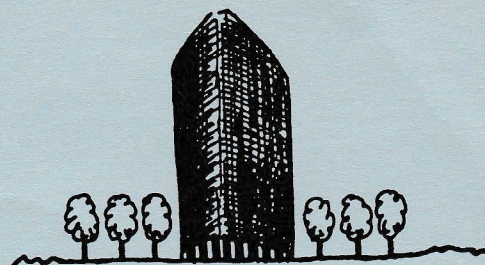
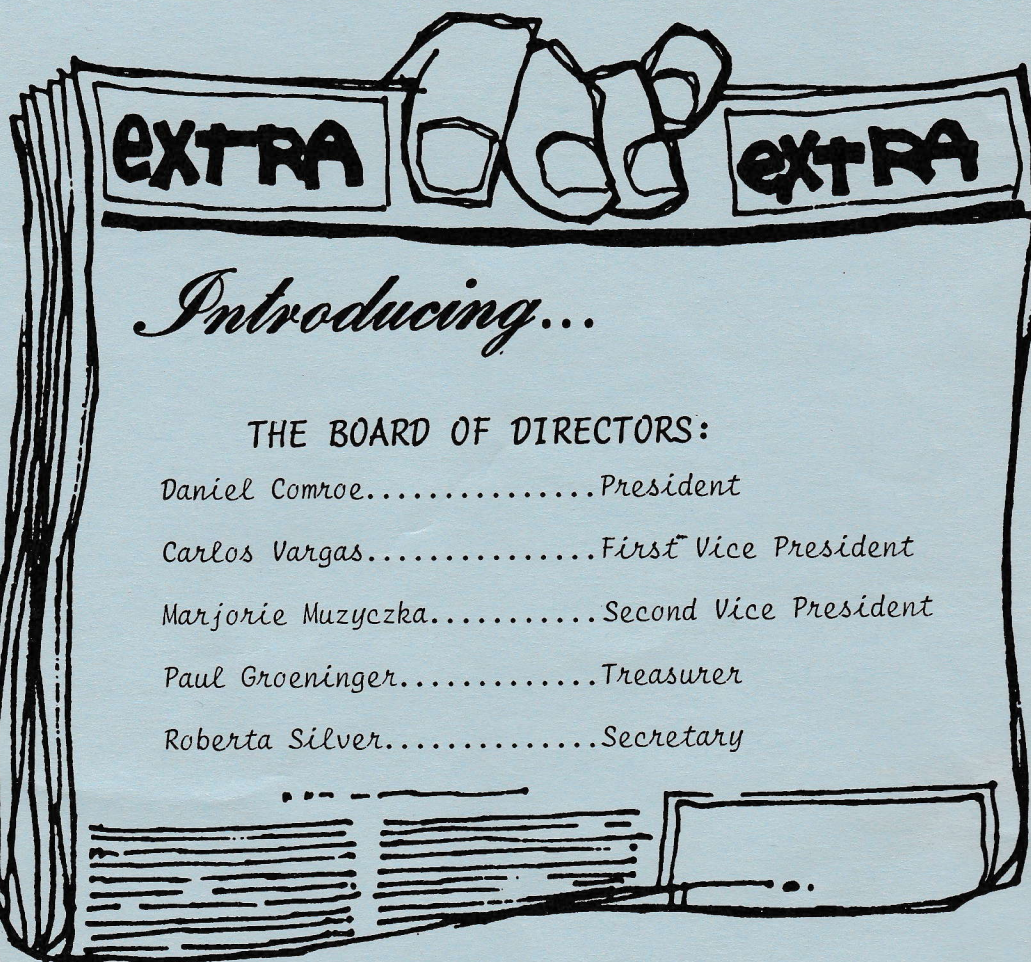


PARK "TOWER TALK"



VOL. 2, NO. 2

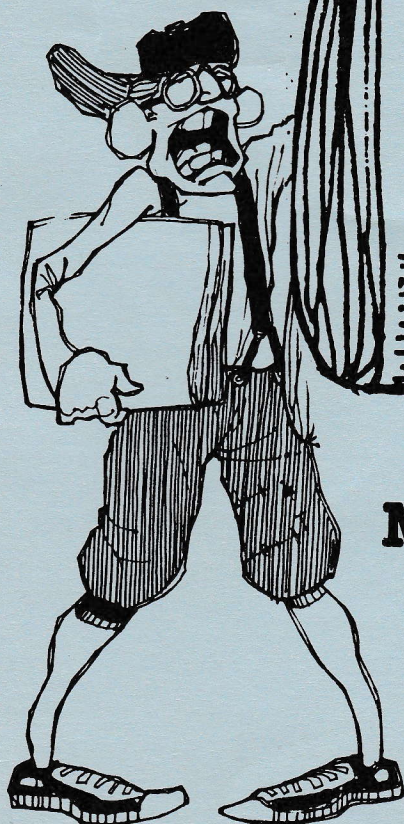
JULY 1989



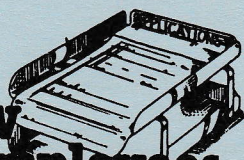
Introducing...

THE BOARD OF DIRECTORS:

Daniel Comroe.....President
Carlos Vargas.....First Vice President
Marjorie Muzyczka.....Second Vice President
Paul Groeninger.....Treasurer
Roberta Silver.....Secretary



New Employees



MANAGEMENT: Leslie Galler

DOORMAN: Vincent Averhart

LIFEGUARD: Katharina Schnatterbeck

JANITOR: John Pascolau

JUPITER REALTY SERVICES, INC.

STORAGE LOCKERS

During the next few weeks, we will be painting permanent numbers on the storage lockers. We hope that these numbers will help clarify any confusion as to which locker you are supposed to be in.

We know that some of you have been occupying a particular locker for a number of years, but your locker number should be the same as your apartment number.

We apologize for the inconvenience, but the sooner everyone cooperates and moves into their correct locker, the better we will all be in the long run.



"COMING HOME".....FOR A WHILE

This writer has been away from Park Tower for some time and it's nice to "be home" again-- at least for the time being. It's great to see old friends. My compliments to management, maintenance staff and the condo board for taking excellent care of the big tower on the north lakefront. It's also especially nice to be greeted so each day by the wonderful doormen. "Coming home" really made me realize just how much I had missed them!

"Do you know that I'm 96 years old?" That was the first thing the smartly-dressed man said to me as he sat down in the Park Tower lobby. During the summer months I found myself looking forward to giving him a smile and saying "hello" as I stopped for mail or returned from an errand. He'd always smile back with blue eyes twinkling and I was lucky enough to become his friend. From the day that I met him, conversation always turned to the joy of celebrating his 100th birthday.

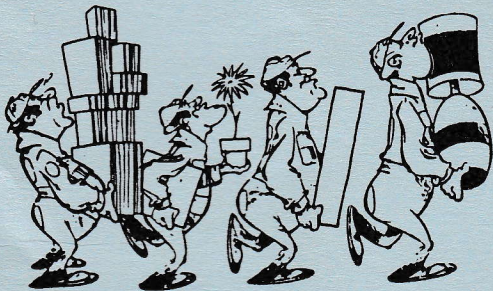
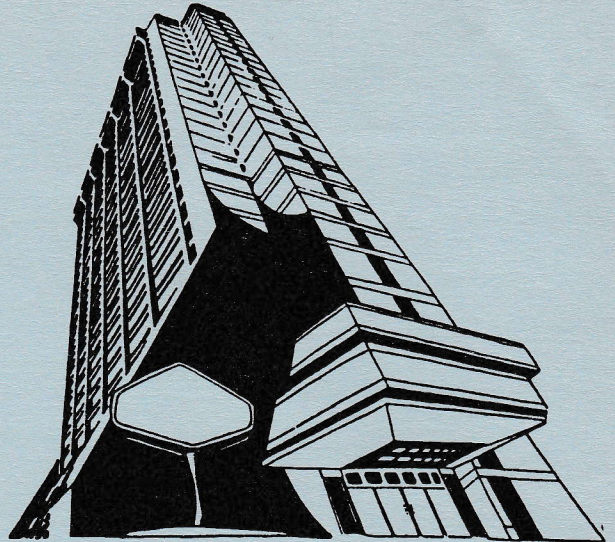
ABE PEARLMAN did celebrate his 100th birthday with his wife, HELEN, his family, and a host of friends. In fact, ABE nearly reached 103! He liked people, and lived a very full life. Many Park Tower residents may remember seeing ABE during the summer months. This summer his usual seat in the lobby will be empty and we were saddened to hear of his passing in February. To his loving wife HELEN, we extend our sympathy.

Those living in PARK TOWER also said goodbye to another long-time resident. SONIA SHAPIRO brought a lot of joy into the lives of many during the time that she lived here. Despite the fact that she experienced constant discomfort from arthritis, she always seemed to have a smile and was a good friend of many. In later years, she moved to California to be with her son's family and took so much joy in being with her grandchildren. SONIA left us for the final time during March and the warmth that she shared with so many cannot easily be replaced. By Jan Zielke

REAL ESTATE 1982 TAX REFUND

The law firm of Sheridan and Pearlman were retained by the Association to challenge the tax liability for the 1983 real estate tax year and to seek a refund of a portion of the 1982 tax liability. They were successful in both areas.

If you owned your unit in 1982, you are entitled to a refund. Refunds should have been issued in late 1987 or early in 1988. Anyone who has not yet received theirs, may wish to contact Michael J. Sheridan at 372-2411.



MOVE IN/ MOVE OUT.....

"I TOLD YOU TO RESERVE TIME."

Move ins and move outs are permitted during the hours of 9:00am till 5:00pm. Monday thru Friday. No moves are allowed during the evening hours or on weekends without prior approval from the management office- and few exceptions are made.

If you are planning a move, please call Park Tower Management Office at 769-3250 to reserve an elevator.

An elevator will not be locked off for a move unless the required security deposit and security officer fee is paid prior to the move. Please note that the Association rules call for an automatic fine of \$150.00 for any unscheduled moves. This fine is assessed to the unit owner who, in turn, may withhold tenant's security deposit to cover the fine.

LAUNDRY ROOM BLUES

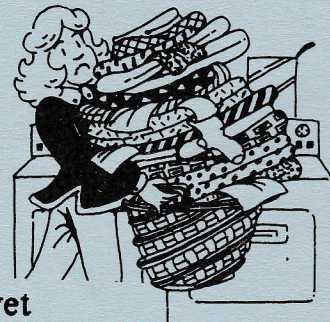
LAUNDRY ROOM BLUES- ('lon-dre 'rum 'bluz)n.

A common ailment known to the residents when faced with idle washers and dryers full of clothes left by a previous resident.

SYMPTOMS- Fatigued arm muscles (from holding one's bundle of wet clothes) and throbbing temples (from anger and frustration over the whole situation).

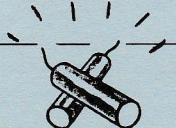
CURE- Awareness, consideration, speed: ie; prompt removal of one's clothes from the machines after cycles have been completed. Use no more than 3 machines at one time.

Residents!! Please help us fight this epidemic. Consideration is a sure cure for the "Laundry Room Blues."



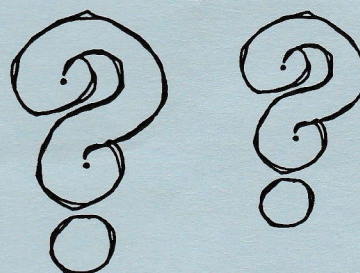
COMMUNITY CALENDAR AT A GLANCE

JULY

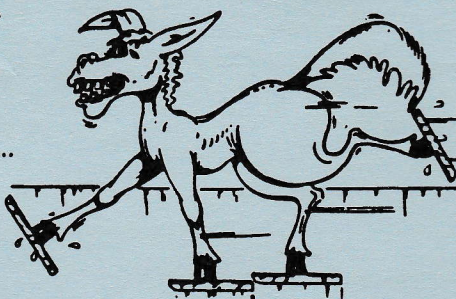
SUNDAY	MONDAY	TUESDAY	WEDNESDAY	THURSDAY	FRIDAY	SATURDAY
						1
2	3 GRANT PARK FIREWORKS	4 JULY 4 th 	5	6	7	8
9 TRIATHLON	10	11	12	13	14	15 CHICAGO MACKINAC BOAT RACE
16	17	18	19	20	21	22
23 AIR & WATER SHOW	24	25	26	27	28	29 GOSPEL FEST!!
30	31					

QUESTION OF THE MONTH

One of the most important pieces of motion picture equipment was invented and developed in Edgewater by a man who called this area home. Do you know the man's name and what he invented?????



DID YOU KNOW THAT.....there was once a large riding stable and Broadway?
on the corner of Foster
Appropriately enough,
the location for
transportation.....
the site is now
more luxurious
..Fanning Cadillac!



ANSWER TO EDGEWATER QUIZ: William N. Selig lived in Edgewater and developed the first motion picture camera. By Jan Zielke

