



Residential Recycling

Park Tower 2021



What CAN you recycle?



- Paper: office and printer (white and colored), envelopes, junk mail, magazines, newspaper, Post-it notes
- Aluminum, bi-metal and steel cans
- Rigid plastics: bottles and jugs (i.e., water, soda, juice, detergent and milk bottles)
- Flattened, empty cardboard boxes
- Empty, clean and dry fiber cartons
- Clean glass bottles and jars

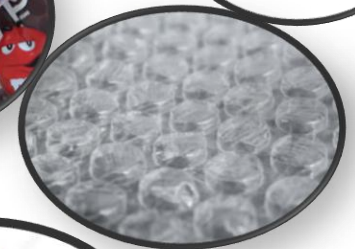


Recycling must be CLEAN, DRY and EMPTY

What CAN'T you recycle?



- Food or beverage waste
- Soft plastic packaging & bubble wrap
- Styrofoam
- Padded & Tyvek style envelopes
- Paper coffee cups & K cups
- Tissues & paper towels
- Straws and plastic cutlery
- Candy & chip wrappers
- Shredded paper
- Pizza boxes
- Paper plates
- Plastic bags
- Pouches
- PPE



Wait, what about the chasing arrows?

- The number on the item identifies the plastic resin code of what it is made from, **not necessarily its recyclability.**



This says to drop off at the store.



This is a #4 but it is a soft plastic and must go in the trash.

Consider starting a soft plastics recycling area at home and drop off at the grocery store

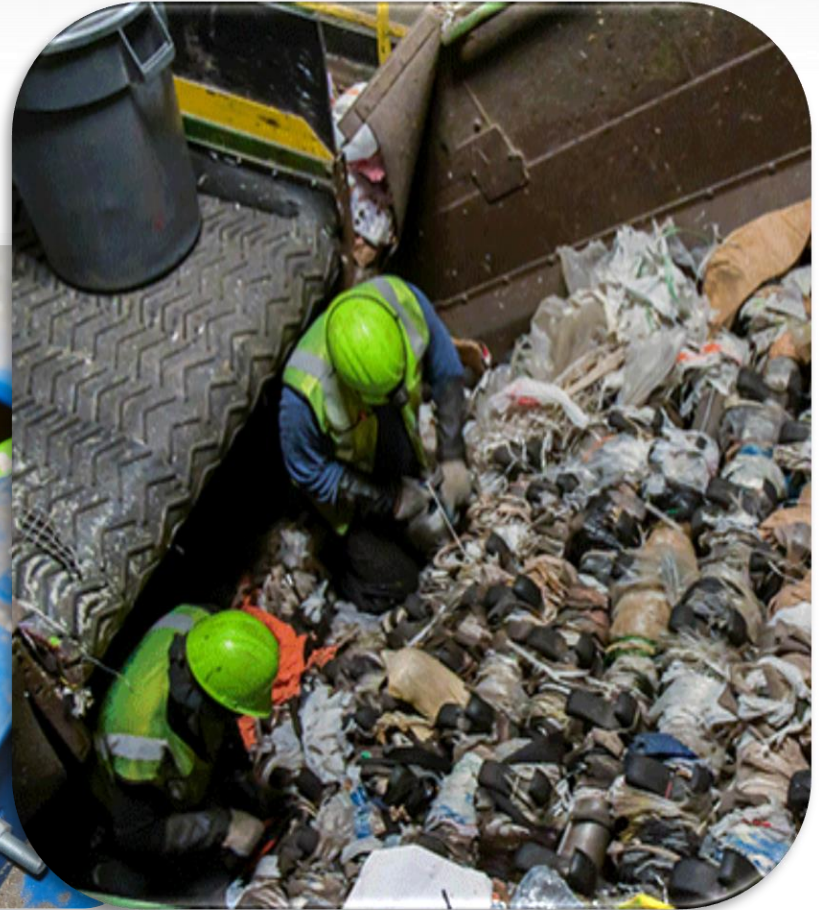
Recycling procedure 101

- Remove packaging and flatten boxes.
- Rinse any items with food residue.
- Nothing smaller than a credit card in the recycling.
- Place all recycling **loose** inside the appropriate container.
- **Do not use bags!** Clear bags are used **only** to prevent leakage in bottle and can containers at businesses which should be then emptied loosely into outside containers.



Plastic bags and flexible/soft packaging should not go in the recycling!

- Plastic bags/packaging can get caught in the machinery and must be cut out **by hand**.



The process at our Chicago recycling center



Sorted material ready to be sent to be used in making new products



What contaminants do you see?



Remember to remove packaging before you put it in the recycling!



Do not put recycling in bags!



Remove soft/flexible packaging wrap before you put items in the recycling!



Do not put pizza boxes in recycling!



Do not put bottles with liquid or backpacks in the recycling!



Do not put large household plastic or toys in the recycling!

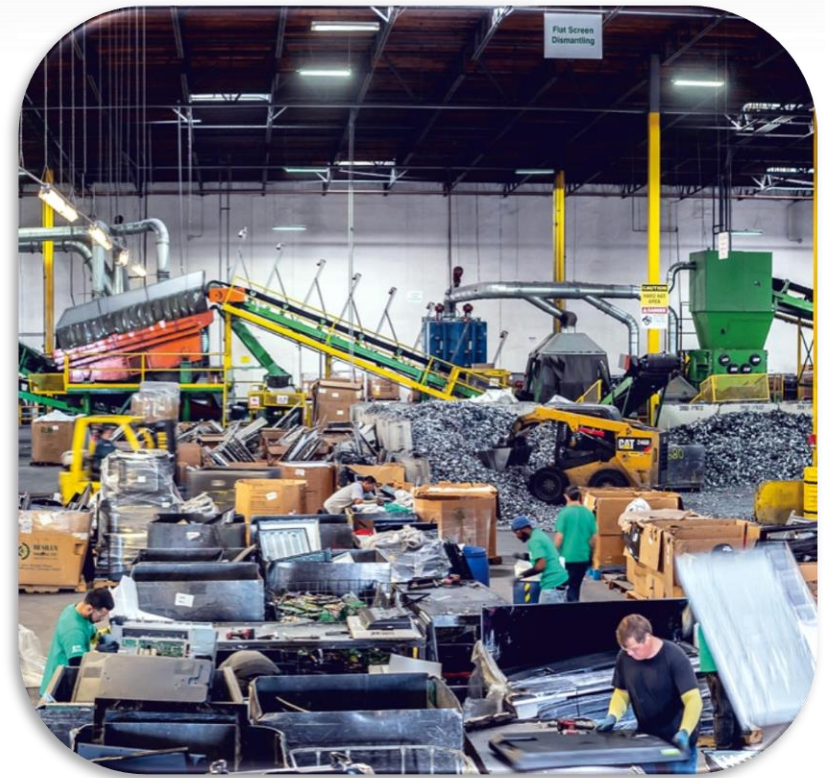
Why we shouldn't put electronics in the trash.



- Since 2012 electronics have been banned from Illinois landfill because they contain hazardous waste such as lead and mercury.
- Last year, there were 343 reported fires at U.S. and Canadian waste and recycling facilities due to battery-powered electronics, many of which could have been prevented had consumers recycled their old cell phones, laptops and other lithium battery-powered electronic devices.

Please do not put electronics in the trash:

- During **Green Week** bring your electronics down by the security office where they will be recycled by our partner ERI International.
- ERI is ESteward certified, the highest level of certification in the electronics recycling industry.
- Your data is wiped 7 times before it is either recycled, broken down for parts or refurbished.



More information on ERI can be found at <https://eridirect.com/>

More actions to consider:

- Bring your shredding to a local Shred Event or at the back entrance of the building during Green Week. Do not put it in your recycling!
- Bring used cooking oil, hazardous waste, electronics, fluorescent bulbs and batteries to Chicago's Hazardous Waste collection site at [1150 N. North Branch Street](http://1150.N.North.Branch.Street) .
- Paint can be recycled at local ACE Hardware stores for a small fee.
 - Start a soft plastics recycling program and bring to your local Jewel or grocery stores.

You can include clean bread bags, TP and paper towel wrap, bubble wrap and Amazon bubble packs with the label removed. More information available at:

<https://www.albertsonscorporation.com/>



More sites to check out!

- Unsubscribe from catalogues/junk mail by calling the company or registering at <https://www.optoutprescreen.com/?rf=t> and <https://dmachoice.thedma.org/index.php>.
- Don't know how to handle special materials? Check your city or county website or <https://earth911.com/> or go to <https://www.terracycle.com/en-US/>
- Take the city of Chicago recycle quiz at <https://www.recyclebycity.com/chicago>
- Recycle your unused prescriptions. Find a local spot at:
https://www.chicago.gov/city/en/depts/cdph/supp_info/healthy-communities/pharmaceuticals_dropofflocations.html



Please see more information and
watch more videos, please check
out our website at:

<https://recyclingsimplified.com/>

Thank You!