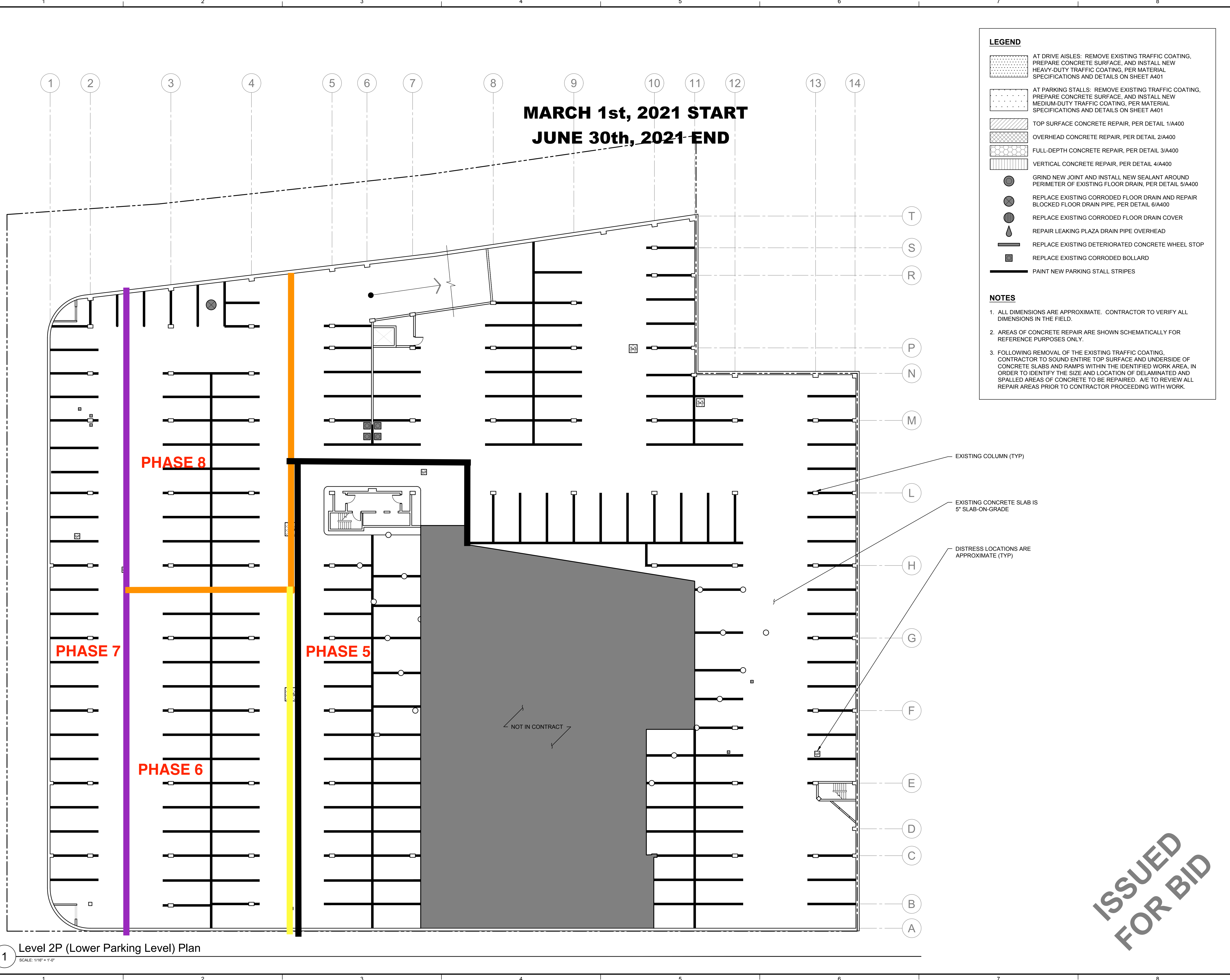


Plotted: 9/25/2019 5:49 PM by Rogers, Sarah File Name: p:\2017\2017_6224\1017_6224.dwg

© Copyright 2018. All rights reserved. No part of this document may be reproduced in any form or by any means without permission from Wiss, Janney, Elstner Associates, Inc. (WJE). WJE disclaims any responsibility for its unauthorized use.



MARCH 1st, 2021 START
JUNE 30th, 2021 END

LEGEND

- AT DRIVE AISLES: REMOVE EXISTING TRAFFIC COATING, PREPARE CONCRETE SURFACE, AND INSTALL NEW HEAVY-DUTY TRAFFIC COATING, PER MATERIAL SPECIFICATIONS AND DETAILS ON SHEET A401
- AT PARKING STALLS: REMOVE EXISTING TRAFFIC COATING, PREPARE CONCRETE SURFACE, AND INSTALL NEW MEDIUM-DUTY TRAFFIC COATING, PER MATERIAL SPECIFICATIONS AND DETAILS ON SHEET A401
- TOP SURFACE CONCRETE REPAIR, PER DETAIL 1/A400
- OVERHEAD CONCRETE REPAIR, PER DETAIL 2/A400
- FULL-DEPTH CONCRETE REPAIR, PER DETAIL 3/A400
- VERTICAL CONCRETE REPAIR, PER DETAIL 4/A400
- GRIND NEW JOINT AND INSTALL NEW SEALANT AROUND PERIMETER OF EXISTING FLOOR DRAIN, PER DETAIL 5/A400
- REPLACE EXISTING CORRODED FLOOR DRAIN AND REPAIR BLOCKED FLOOR DRAIN PIPE, PER DETAIL 6/A400
- REPLACE EXISTING CORRODED FLOOR DRAIN COVER
- REPAIR LEAKING PLAZA DRAIN PIPE OVERHEAD
- REPLACE EXISTING DETERIORATED CONCRETE WHEEL STOP
- REPLACE EXISTING CORRODED BOLLARD
- PAINT NEW PARKING STALL STRIPES

NOTES

1. ALL DIMENSIONS ARE APPROXIMATE. CONTRACTOR TO VERIFY ALL DIMENSIONS IN THE FIELD.
2. AREAS OF CONCRETE REPAIR ARE SHOWN SCHEMATICALLY FOR REFERENCE PURPOSES ONLY.
3. FOLLOWING REMOVAL OF THE EXISTING TRAFFIC COATING, CONTRACTOR TO SOUND ENTIRE TOP SURFACE AND UNDERSIDE OF CONCRETE SLABS AND RAMPS WITHIN THE IDENTIFIED WORK AREA, IN ORDER TO IDENTIFY THE SIZE AND LOCATION OF DELAMINATED AND SPALLED AREAS OF CONCRETE TO BE REPAIRED. A/E TO REVIEW ALL REPAIR AREAS PRIOR TO CONTRACTOR PROCEEDING WITH WORK.

WJE ENGINEERS
ARCHITECTS
MATERIALS SCIENTISTS

Wiss, Janney, Elstner Associates, Inc.
10 South LaSalle Street, Suite 2600
Chicago, Illinois 60603
312.372.0555 tel | 312.372.0873 fax
www.wje.com

Headquarters & Laboratories: Northbrook, Illinois
Atlanta | Austin | Boston | Chicago | Cleveland | Dallas | Denver | Detroit
Honolulu | Houston | Los Angeles | Minneapolis | New Haven | New York
Philadelphia | Princeton | San Francisco | Seattle | South Florida | Washington, D.C.

Consultants

Project

**Park Tower - Parking Garage
Repair Project**
5415 North Sheridan Road
Chicago, Illinois 60640

Client

Park Tower Condo Association
5415 North Sheridan Road,
Suite 107
Chicago, Illinois 60640

2019-09-25 Issued for Bid

Mark	Date	Description

0 1/2" 1" 2"
THIS SHEET PLOTS FULL SIZE
AT 24x36 (INCHES)

Project No.	2017.6224
Date	2019-09-25
Drawn	SLR
Checked	GIT
Scale	As Noted

Level 2P Plan

Sheet Title

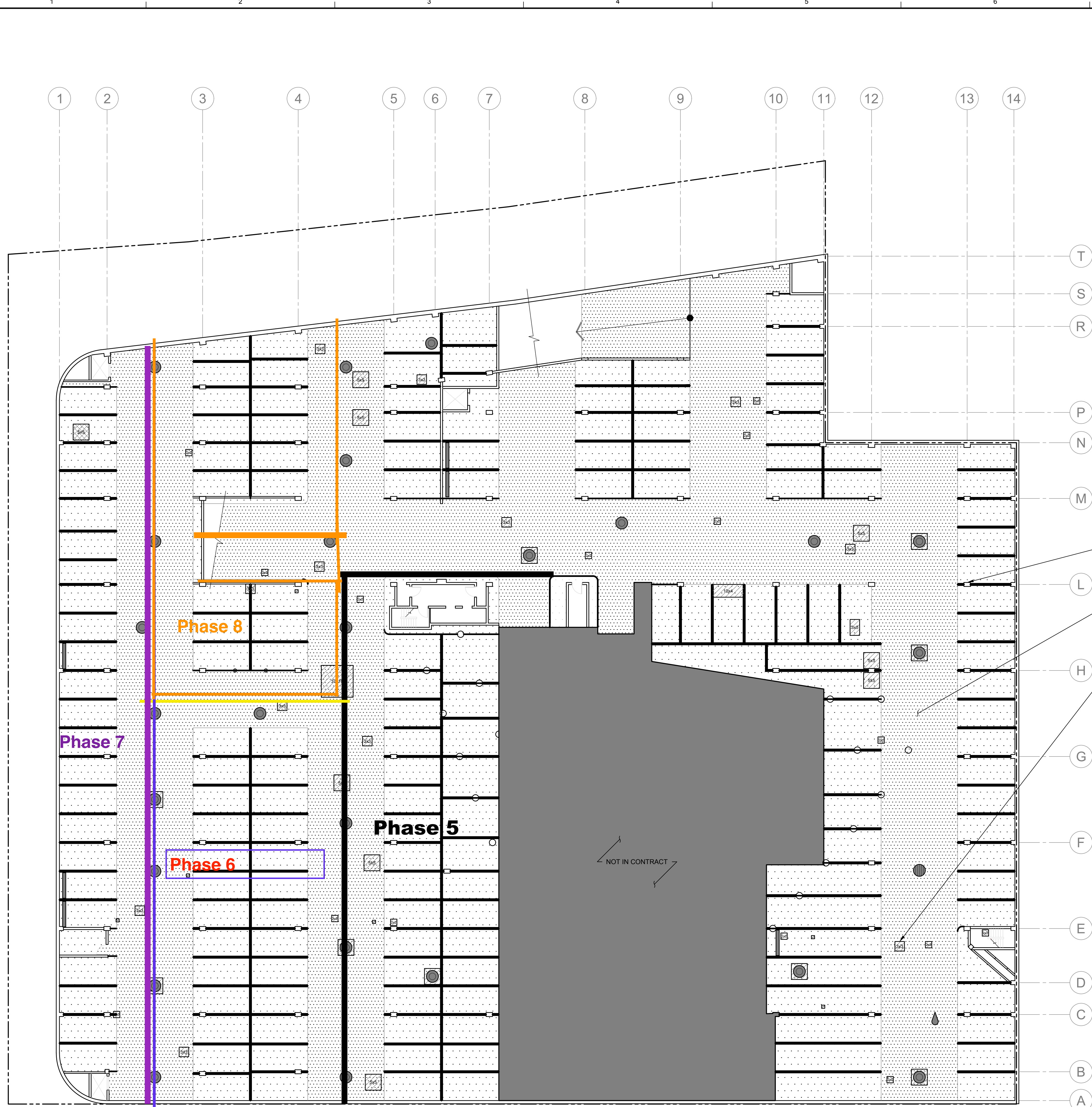
Sheet No. **A100**

ISSUED
FOR BID

1 Level 2P (Lower Parking Level) Plan
SCALE: 1/16" = 1'-0"

Plotted: 9/25/2019 5:49 PM by Rogers, Sarah File Name: p:\2017\2017_6224\101_6224.dwg

© Copyright 2018. All rights reserved. No part of this document may be reproduced in any form or by any means without permission from Wiss, Janney, Elstner Associates, Inc. (WJE). WJE disclaims any responsibility for its unauthorized use.



LEGEND

- AT DRIVE AISLES: REMOVE EXISTING TRAFFIC COATING, PREPARE CONCRETE SURFACE, AND INSTALL NEW HEAVY-DUTY TRAFFIC COATING, PER MATERIAL SPECIFICATIONS AND DETAILS ON SHEET A401
- AT PARKING STALLS: REMOVE EXISTING TRAFFIC COATING, PREPARE CONCRETE SURFACE, AND INSTALL NEW MEDIUM-DUTY TRAFFIC COATING, PER MATERIAL SPECIFICATIONS AND DETAILS ON SHEET A401
- TOP SURFACE CONCRETE REPAIR, PER DETAIL 1/A400
- OVERHEAD CONCRETE REPAIR, PER DETAIL 2/A400
- FULL-DEPTH CONCRETE REPAIR, PER DETAIL 3/A400
- VERTICAL CONCRETE REPAIR, PER DETAIL 4/A400
- GRIND NEW JOINT AND INSTALL NEW SEALANT AROUND PERIMETER OF EXISTING FLOOR DRAIN, PER DETAIL 5/A400
- REPLACE EXISTING CORRODED FLOOR DRAIN AND REPAIR BLOCKED FLOOR DRAIN PIPE, PER DETAIL 6/A400
- REPLACE EXISTING CORRODED FLOOR DRAIN COVER
- REPAIR LEAKING PLAZA DRAIN PIPE OVERHEAD
- REPLACE EXISTING DETERIORATED CONCRETE WHEEL STOP
- REPLACE EXISTING CORRODED BOLLARD
- PAINT NEW PARKING STALL STRIPES

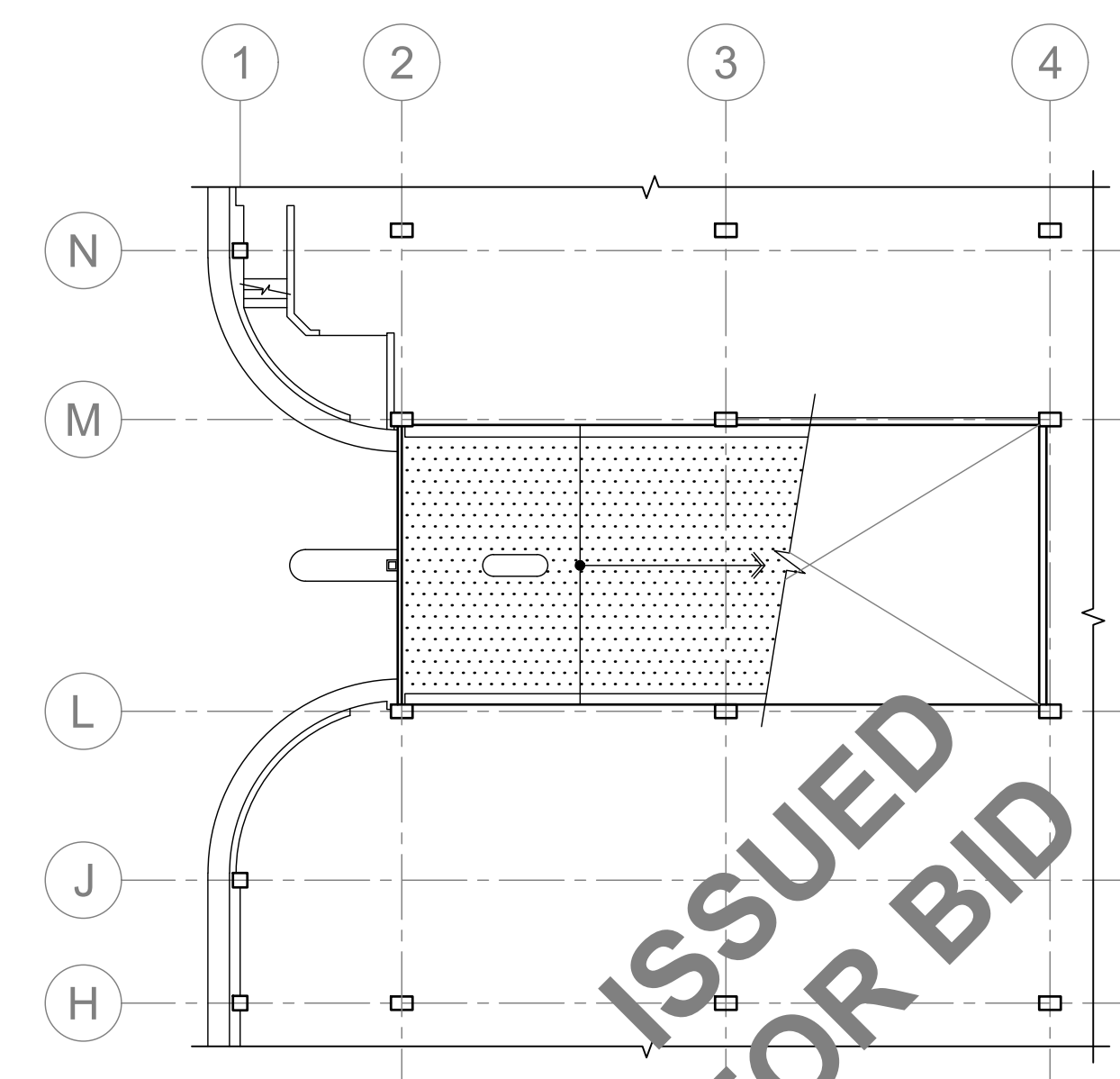
NOTES

1. ALL DIMENSIONS ARE APPROXIMATE. CONTRACTOR TO VERIFY ALL DIMENSIONS IN THE FIELD.
2. AREAS OF CONCRETE REPAIR ARE SHOWN SCHEMATICALLY FOR REFERENCE PURPOSES ONLY.
3. FOLLOWING REMOVAL OF THE EXISTING TRAFFIC COATING, CONTRACTOR TO SOUND ENTIRE TOP SURFACE AND UNDERSIDE OF CONCRETE SLABS AND RAMPS WITHIN THE IDENTIFIED WORK AREA, IN ORDER TO IDENTIFY THE SIZE AND LOCATION OF DELAMINATED AND SPALLED AREAS OF CONCRETE TO BE REPAIRED. A/E TO REVIEW ALL REPAIR AREAS PRIOR TO CONTRACTOR PROCEEDING WITH WORK.

EXISTING COLUMN (TYP)

EXISTING CONCRETE SLAB IS 10" SLAB W/ 9"x10" BY 5"-THICK DROP PANELS

DISTRESS LOCATIONS ARE APPROXIMATE (TYP)



Wiss, Janney, Elstner Associates, Inc.
 10 South LaSalle Street, Suite 2600
 Chicago, Illinois 60603
 312.372.0555 tel | 312.372.0873 fax
 www.wje.com
 Headquarters & Laboratories: Northbrook, Illinois
 Atlanta | Austin | Boston | Chicago | Cleveland | Dallas | Denver | Detroit
 Honolulu | Houston | Los Angeles | Minneapolis | New Haven | New York
 Philadelphia | Princeton | San Francisco | Seattle | South Florida | Washington, D.C.

Consultants

Project
Park Tower - Parking Garage Repair Project
 5415 North Sheridan Road
 Chicago, Illinois 60640

Client
Park Tower Condo Association
 5415 North Sheridan Road,
 Suite 107
 Chicago, Illinois 60640

Mark	Date	Description
2019-09-23	2019-09-23	Issued for Bid

Scale: 1/2" = 1'-0"

THIS SHEET PLOTS FULL SIZE AT 24x36 (INCHES)

Project No.	2017.6224
Date	2019-09-25
Drawn	SLR
Checked	GIT
Scale	As Noted

1 Level 1P (Upper Parking Level) Plan
 SCALE: 1/16" = 1'-0"

2 Level 1P (Upper Parking Level) Ramp Detail Plan
 SCALE: 1/16" = 1'-0"